

INSTALLATION INSTRUCTIONS

VERY IMPORTANT SAFETY INSTRUCTIONS



**THIS PROCEDURE MUST BE FOLLOWED
AND PROPERLY SETS UP THE SAFETY STOP OF THE HAWM-E SYSTEM**

1. PREPARATION

Needed to do this setup:

- a laptop computer running windows Vista, 7 or 8
- an interface cable USB2LIN (*1*)
- the software 'CBD4+5Configurator' installed on that computer (*2*)



2. SETUP

**2.1 Preferably, do this setup before fixing the board to the frame.
However, if the board has been installed on the frame, remove it:**

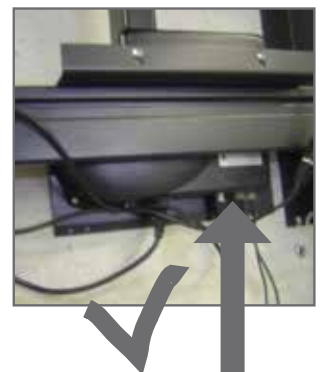
**2.1 On the computer that you will be using for the setup:
unplug all USB devices that are not absolutely necessary.**

**2.3 Plug the LIN2USB003 cable into the free slot of the HAWM-E
controller (picture) and directly into a USB port of the computer.**

- You don't have to unplug the command buttons.
- The LED in the cable must now light up RED.

(*1*): the cable and matching software must be purchased through VSV

(*2*): the software is supplied by VSV and can be downloaded at i3-learning.com/i3hawm

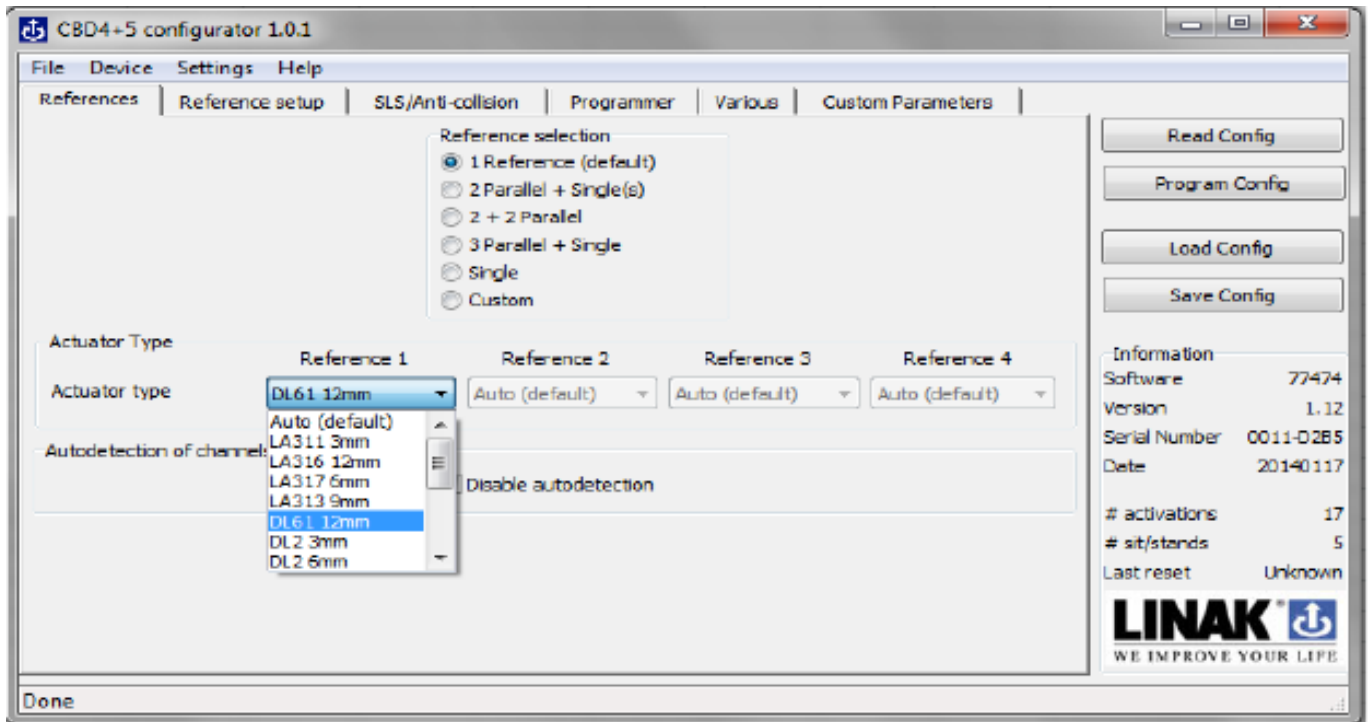


- Open the downloaded folder
- After opening the folder, choose:

Naam	Gewijzigd op	Type	Grootte
Actuators	2/10/2012 14:47	Configuratie-inste...	3 kB
cbd4cfg	26/10/2012 12:51	Toepassing	303 kB
cbd4cfg	16/10/2013 13:46	Configuratie-inste...	0 kB
How to configure a CBD4advanced	9/03/2012 9:11	Adobe Acrobat D...	291 kB
uninst	16/10/2013 13:46	Toepassing	56 kB

2.4 RUN THE PROGRAM AND CHANGE THE SETTINGS

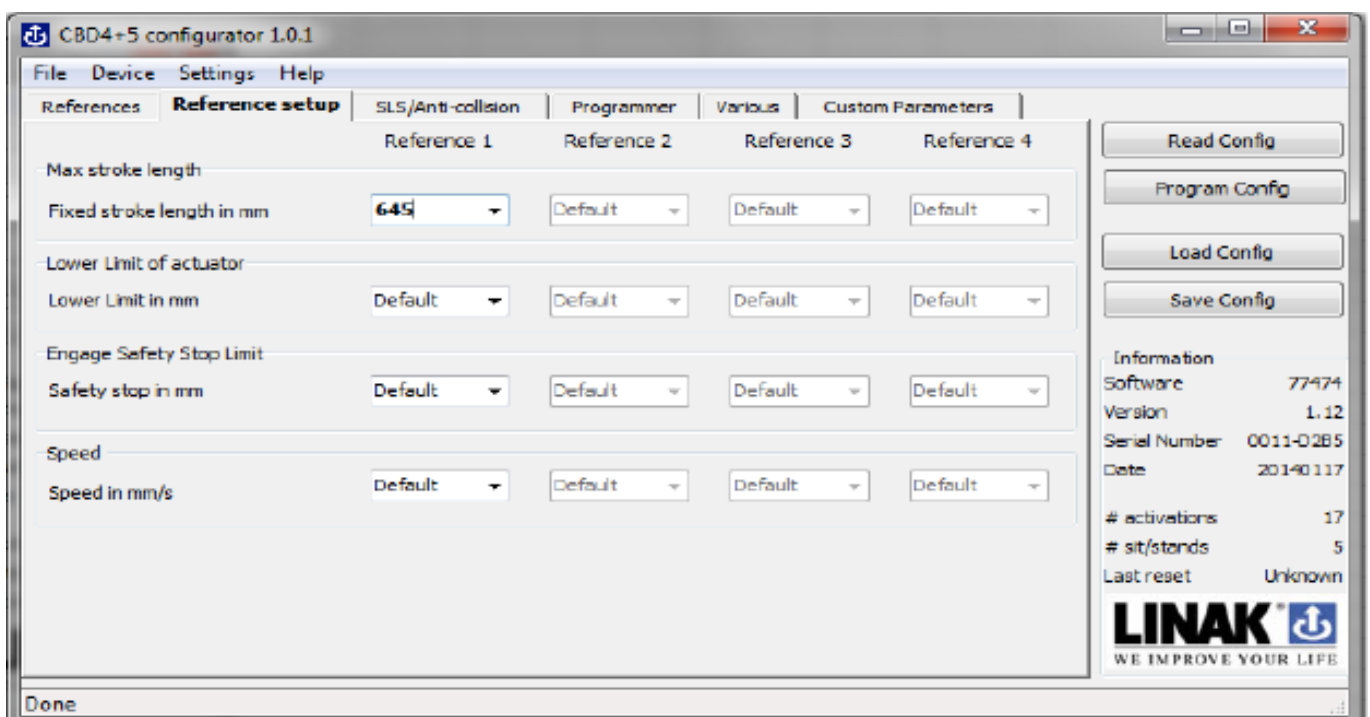
Reading the programmed configuration
REFERENCES



DEFAULT REFERENCE

DL61 12 mm is the actuator type
Max. stroke is 650 mm (default)

(lower settings generate a softstop)



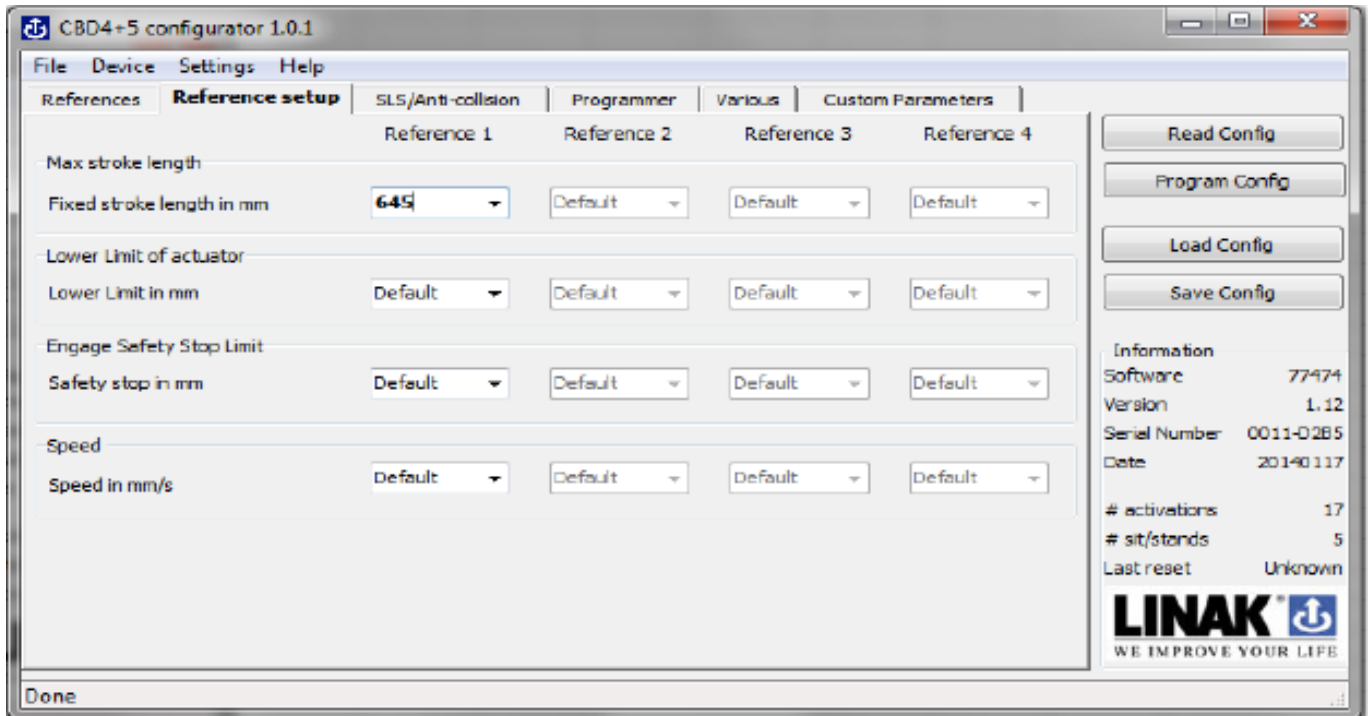
SLS/ANTI-COLLISION

Choose: always on

the lower the values, the more sensitive the system will operate.

If set too sensitive, the actuator will briefly go in the right direction and then automatically a few centimeters in the other direction.

When you have completed the modifications (for example increasing the sensitivity) you have to read these new settings true the program configuration.

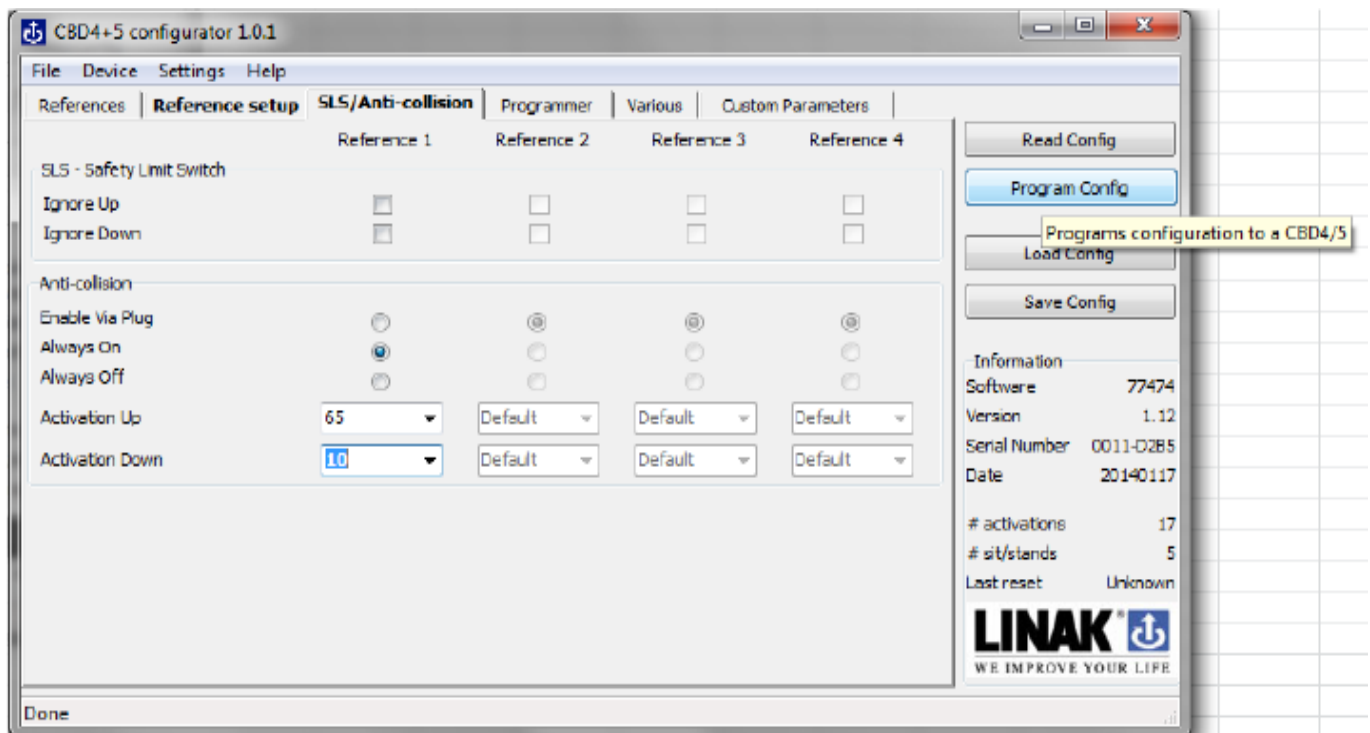


When "done" appears, you have the new settings installed in the control box

To control your settings, click "read configuration" and your settings will have over written the previous settings.

In a difficult connection it is best to connect the USB2LIN cable to the computer. Open the configurator and when ready, make the connection to the control box.

When you let the actuator run down to its lowest position, the system will initialize itself.



*Detailed explanation can be found in the document "how to configure a CBD4advanced" in the installations folder.

5 VERIFY THE NEW SETTINGS

- Run the system 5x all the way up and down. It should do so smoothly without stopping. If it does stop, the chosen values are too sensitive. Increase their value in small steps, according to the direction of movement and re-programm the controller as described in previous steps. And again, run it 5x up and down.
- You may want to test the anti-collision function by blocking the moving board in either direction. It should stop and reverse direction over a short distance.